

VISIT AN NCIS COMMUNITY PARTNER CLINIC

National University Polyclinics

Bukit Batok Polyclinic
Clementi Polyclinic
Queenstown Polyclinic

Bukit Panjang Polyclinic
Jurong Polyclinic

Choa Chu Kang Polyclinic
Pioneer Polyclinic

Family Medicine Clinics

(in care partnership with the National University Health System)

Frontier FMC @ Clementi

3151 Commonwealth Ave West
#04-01 Grantral Mall @ Clementi, S(129581)
☎ 6778 8362

Keat Hong FMC @ Choa Chu Kang

2 Choa Chu Kang Loop
#03-02 Keat Hong Community Club, S(689687)
☎ 6769 0750

GP Clinics

(in care partnership with the National University Health System)

Healthsprings Medical Clinic

Blk 524A, Jelapang Road, Greenridge Shopping Centre, #02-01/02, S(671524) ☎ 6892 6681

LC Clinic Medical Surgery Aesthetics

Blk 446, Clementi Avenue 3, #01-191, S(120446) ☎ 6464 0932

Medical and Dental Centre @ Commonwealth

Blk 88, Tanglin Halt Road, S(141088) ☎ 6475 6006

Mei Ling Clinic

Blk 158, Mei Ling Street, #01-80, S(140158) ☎ 6474 1782

Phoenix Clinic & Surgery

Blk150, Jalan Teck Whye, #01-43, S(680150) ☎ 6767 5345

Princeton Family Clinic

Blk 445, Fajar Road, Fajar Shopping Centre, #01-546, S(670445) ☎ 6762 2278

The People's Clinic

Blk 145, Teck Whye Avenue, S(680145) ☎ 6769 3766



FOLLOW-UP CANCER CARE IN THE COMMUNITY

Patients who require cancer care can now have their follow-up done at a primary care clinic near their home. Your primary care doctor can also help manage your chronic (e.g. diabetes, high blood pressure) and acute (e.g. cough, flu) conditions at the same time.



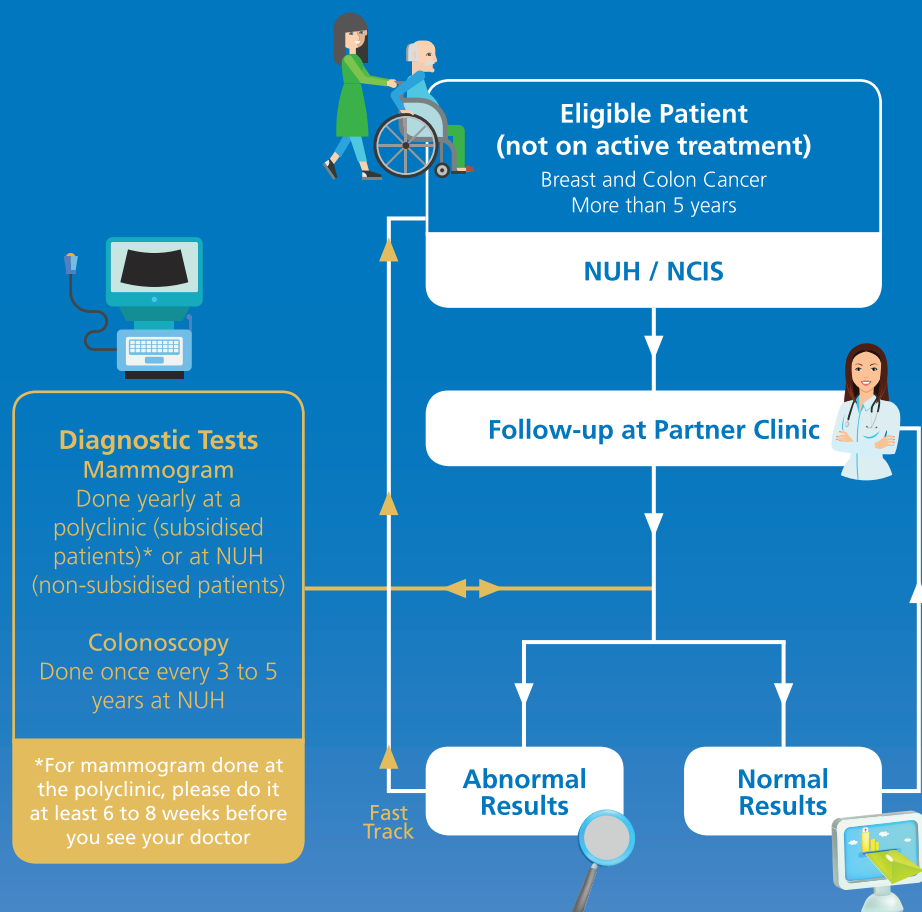
National University
Hospital



National University
Cancer Institute
Singapore

HOW IT WORKS

FREQUENTLY ASKED QUESTIONS



Visit www.ncis.com.sg for more information.

1. What is Cancer Survivorship in the Community?

Cancer Survivorship in the Community is a programme that focuses on follow-up cancer care for survivors. By working closely with our primary care providers, we aim to integrate and provide continuity of care for patients back in the community.

2. I've been told that I've been discharged from NCIS. What's next?

Before you leave NCIS, an appointment with your primary care doctor would have been scheduled. Please come for your scheduled appointment and bring your NCIS Cancer Treatment Summary and Survivorship Care Plan with you.

3. What is the NCIS Cancer Treatment Summary and Survivorship Care Plan?

It is a document that contains information on the cancer treatment that you have received at NCIS and screening recommendations to keep you well. This information is essential for your subsequent care.

4. Is it safe to stop seeing my cancer specialist in the hospital?

You would have completed your cancer treatment in the hospital and be deemed fit by our cancer specialist to continue your care with our primary care partners.

5. Will the primary care doctors know what to look out for and how to continue my care plan?

Yes, they have undergone training by our cancer specialists and have the knowledge to manage care for cancer survivors. Your general health will also be looked after through regular screenings for chronic diseases and other ailments.

6. What happens when I receive abnormal results?

You will be fast-tracked back to the hospital for further assessment by our specialists.

7. If I am a subsidised patient and have my follow-up done at the GP / FMC, will I become a private patient if I am fast-tracked back to the hospital to see a specialist?

No, you will not. Your subsidised status will be retained for the same conditions which you have been discharged for. For example, if your care was transferred to a primary care doctor for colorectal cancer and an abnormal result related to colorectal cancer is detected, your subsidised status will be retained. However, if the referral back to the hospital is for a different condition, you will be a private patient unless you are a CHAS card holder.

8. What if I forget my appointment?

You may either contact the primary care partner which you have chosen or the NCIS cancer appointment line for help.

9. What do I need to bring when I go to my primary physician?

You will have to bring your NCIS Cancer Treatment Summary and Survivorship Care Plan from your cancer specialist in the hospital to your primary physician on the first visit.

Speak with your doctor to find out if you are eligible!

National University Cancer Institute, Singapore (NCIS)
☎ (65) 6772 2002 ✉ CancerApptLine@nuhs.edu.sg